

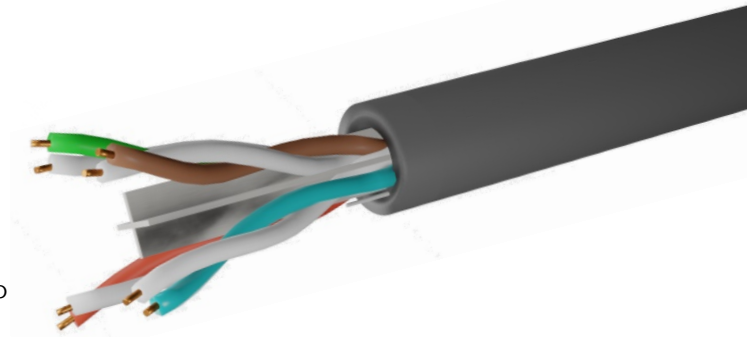
Cat6 UTP Grey PVC Cable

**ADI
PRO**

PRODUCT OVERVIEW

Solid conductor 4 pair Cat6 U/UTP (Unscreened/Unscreened twisted Pairs) cable with PVC Grey outer sheath.

Each cable consists of 8 colour coded high density polyethylene insulated conductors. These are twisted together to form 4 pairs with varying lay lengths. These pairs, together with a strong nylon rip cord are jacketed in PVC material.



ADIC6UTPPVCGRY305

FEATURES

Cat6 4 pair UTP solid cable with 8 colour coded high density polyethylene insulated conductors

Bare copper conductors

305 metres in an easy to pull box

Grey RAL 7004

Reaction for Fire Rating - Eca (CPR Rating)

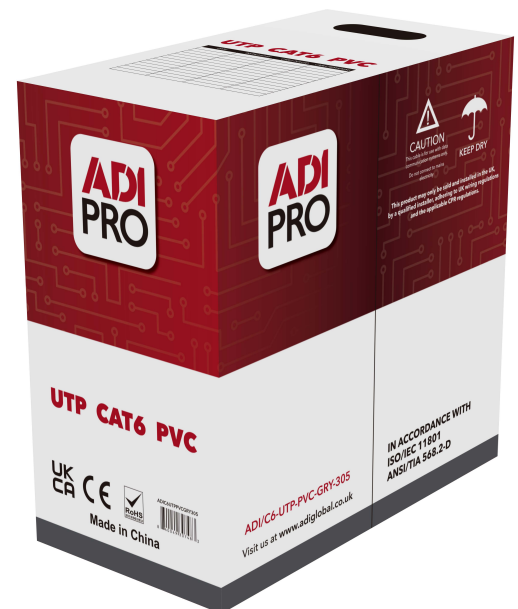
Rip cord for ease of stripping outer sheath

Manufactured and tested to ISO/IEC 11801, ANSI/TIA 568-C.2, CE2014/30/EU, LVD, 2014/35/EU, RoHS2 2011/65/EU standards.

Sequential reverse metre markings (305-0)

24 American Wire Gauge (AWG)

Supports Gigabit Ethernet



For more information contact your ADI sales person

Rev: v2 Feb 23

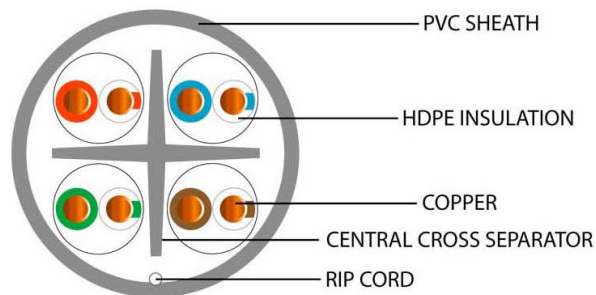
**UK
CA**

CE



Cat6 UTP Grey PVC Cable

CROSS-SECTION DIAGRAM



PRODUCT SPECIFICATIONS

Conductor: Bare Copper

Conductor Size: AWG 24

Overall Cable Diameter (mm): 6.10

Impedance (1-100Mhz): $100\Omega \pm 15\Omega$

Insulation: HDPE

Insulation Thickness (mm): 0.18

Insulation Diameter (mm): 1.02 ± 0.08

Insulation Colour(s): Blue/White/Blue; Orange/White/Orange; Green/White/Green ;Brown/White/Brown

Nylon Rip-Cord: White 210D

Jacket: PVC

Jacket Thickness (mm): 0.55

Rated Temperature : -20°C to 80°C

ADIC6UTPPVCGRY305

For more information contact your ADI sales person

Rev: v2 Feb 23

UK
CA

CE



Cat6 UTP Grey PVC Cable



CONSTRUCTION PRODUCT REGULATIONS (CPR)

EURO CLASS (ca:cable)	CLASSIFICATION CRITERIA		CPR GUIDE		
	FIRE RATING	CPR Description			
Reaction to Fire BS EN ISO 1716			SUBCLASSIFICATIONS FOR EUROCLASSES B _{ca} to D _{ca}		
A_{ca}	Does not contribute to the fire	Due to availability, it will be almost impossible for a cable to meet Aca, so they should only be specified with extreme caution.	(S) SMOKE PRODUCTION	(D) FLAMING DROPLETS	(A) SMOKE ACIDITY
Reaction to Fire BS EN 50399			BS EN 50399/BS EN 61034-2	BS EN 50399	BS EN 60754-2
B1_{ca}	Minimum contribution to the fire	It's highly unlikely the commonly-used cables will be classified to Class B1ca.	s1a: s1 + transmittance >=80% (BS EN 61034-2)	d0: No fall of droplets or flaming particles, times for 1200 seconds	a1: Very low acidity (conductivity <2.5 μS/mm & pH >4.3)
B2_{ca}	Combustible, low flame spread & heat release contribution to the fire	Similar to Class Cca, although a lower acceptable heat release rate and burn measurement. In practice, this is likely to be the highest class cables will meet.	s1b: s1 + transmittance >=60% <80% (BS EN 61034-2)	d1: Fall of droplets or flaming particles that persist for less than 10 seconds, timed for 1200 seconds	a2: low acidity (conductivity <10 μS/mm & pH >4.3)
C_{ca}	Combustible, moderate flame spread & heat release	This is a more rigorous test than Class Dca, this is widely accepted across Europe as the 'go to' classification, but be aware, many cables do not meet Class Cca though availability is improving.	s1: Low production of slow propagation of smoke		
D_{ca}	Combustible, moderate flame spread & heat release	This classification has relatively little use or acceptance within specifying/contracting organisations. This is because no large scale fire growth is measured.	s2: Intermediate production & propagation of smoke	d2: None of the above	d2: None of the above
Reaction to Fire BS EN 60332-1-2			Visit us online: www.adiglobal.com		
E_{ca}	Combustible, limited fire spread of less than 425mm	A basic test for vertical flame propagation for a single insulated wire or cable using a 1 KW pre-mixed flame. Note: This test does not measure heat release, toxic fumes or smoke.	Classes A to E have to be tested by an independent authorised laboratory. Most cables will fall into classes B2ca to Eca.		
F_{ca}	Combustible, fire spread of more than 425mm	Cables classified to Class Fca may have high levels of flammability due to the materials they are made of. This does not mean that the cable cannot be used, it is more likely to be used external.	For a cable to meet Aca, B1ca, B2ca or Cca, there also needs to be regular on-going factory audits.		



This product is rated CPR Euroclass E_{ca} for its reaction to fire

This product should only be installed, by a qualified installer, adhering to local wiring regulations relevant to the application. It is the responsibility of the installer to ensure that the CPR Class installed meets the requirements for the application in their country.

ADIC6UTPPVCGRY305

For more information contact your ADI sales person



CONSTRUCTION PRODUCT REGULATION EURO CLASSES



Visit us online:
www.adiglobal.com

UK
CA

